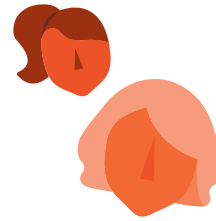


YWCA IMPACT REPORT 2020 EMERGENCY SHELTER

eliminating racism
empowering women
ywca
cass clay

86%
WERE
FLEEING
DOMESTIC
VIOLENCE

22,459
NIGHTS OF SHELTER



1,283
INDIVIDUALS
SHELTERED

680 WOMEN • 603 CHILDREN

249

EMERGENCY ROOM
VISITS AVERTED WITH
THE SANFORD
REGISTERED NURSE
AT YWCA



23
HUMAN
TRAFFICKING
SURVIVORS SERVED
IN DEDICATED UNITS



WHO WE SERVED

42%
WHITE

28%
NATIVE
AMERICAN

28%
AFRICAN
AMERICAN

1%
NATIVE HAWAIIAN
/ PACIFIC ISLANDER

1%
UNKNOWN

AVERAGE LENGTH OF STAY

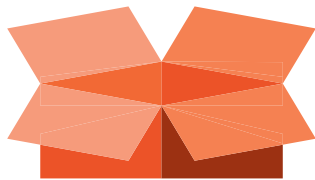
36
DAYS

84%

WHO RECEIVED
HOMELESS
PREVENTION
SERVICES REMAINED
STABLY HOUSED
3 MONTHS LATER



YWCA FOOD PANTRIES FED
12,415 INDIVIDUALS



41%
OF FOOD
PANTRY
PARTICIPANTS
WERE NEW

580
CHILDREN SERVED
AT SHELTER
CHILDREN'S
SERVICES



WHERE PEOPLE ARRIVED FROM

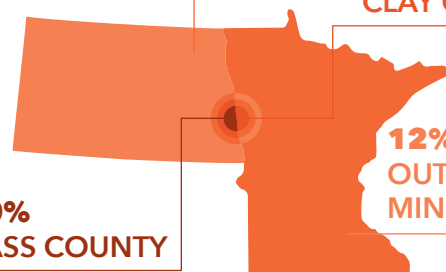
5%
OUTLYING
NORTH DAKOTA

16%
CLAY COUNTY

60%
CASS COUNTY

12%
OUTLYING
MINNESOTA

7%
OTHER

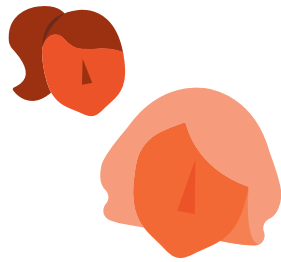


YWCA IMPACT REPORT 2020

SUPPORTIVE HOUSING

eliminating racism
empowering women
ywca
cass clay

226
INDIVIDUALS
HOUSED
95 WOMEN • 131 CHILDREN



93%

OF PARTICIPANTS
OBTAINED
STABLE HOUSING
UPON EXITING
THE PROGRAM



56,327
NIGHTS OF HOUSING



**AVERAGE
LENGTH
OF STAY**



56%

OF PARTICIPANTS
INCREASED THEIR
EDUCATION OR
INCOME LEVEL



71%

OF PARTICIPANTS
IMPROVED THEIR
HEALTH AND
WELLNESS



62%

OF PARTICIPANTS
REDUCED THEIR
USE OF
EMERGENCY
SERVICES

